

TASKalfa 

> PRINT > COPY > SCAN > FAX

TASKalfa 3510i/3010i

MONO MULTIFUNCTIONALS



FLEXIBLE
ALL-ROUNDERS
FOR DEMANDING
OFFICES



 **KYOCERA**
Document Solutions

SHAPING THE FUTURE OF DOCUMENT SOLUTIONS TODAY.

Designed for businesses of all sizes, TASKalfa defines multifunctional devices in a whole new way, delivering the power, performance, quality and ultra-reliability that your business demands. So whether you print, scan, copy or fax – this series will become an essential partner to your business.

Engineered for the critical demands of any business, each TASKalfa multifunction device (MFD) features a sleek design on the outside with advanced imaging technology on the inside. The powerful combination of fast output speeds, Kyocera's unique long life technology, solution integration capabilities,

and consistent high-image quality engineered into each TASKalfa MFD assures superior document imaging every time. That's TASKalfa's number one priority.

Integrating with KYOCERA Mobile Print technology for printing from and scanning to smartphones and tablets, as well as major third party solution partners for advanced cost recovery & security, document workflow, and advanced output management, the TASKalfa mono MFD series meets your day to day needs, every day.

TASKalfa 3510i
35ppm mono

TASKalfa 3010i
30ppm mono





ECO FRIENDLINESS.



Kyocera is an environmentally-concerned global organisation who rigorously follow the principles of the three R's – reduce, reuse and recycle. The importance of having respect for and conserving our environment has been etched in Kyocera's ethos from inception. Our worldwide green policies encourage conservation and recycling, along with the development of products and technologies that can actually minimise the impact on the environment. For example, our use of eco-friendly materials extends to our packaging, which is foam free, and is constructed from biodegradable cardboard. The inks are produced from vegetable and soy dyes and have absolutely no impact whatsoever on the environment, when recycled.

The standard long-life components of the TASKalfa 3510i / 3010i delivers up to 600,000 pages during the first preventive maintenance yield, meaning increased productivity for your business.

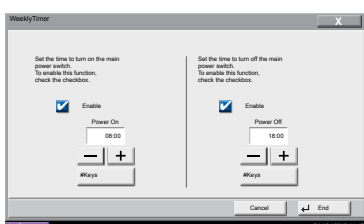
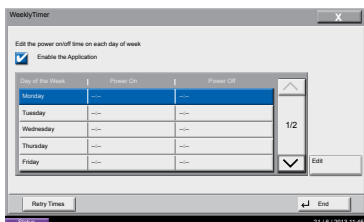
The TASKalfa 3510i / 3010i offers one of the lowest Typical Electricity Consumption (TEC) in the market and represents over a 50% decrease from the previous typical generation of mono multifunctional products which could save your business electricity costs. In addition, the TASKalfa 3510i / 3010i provides deep sleep mode which consumes less than 2 watts of electricity, potentially adding to your savings. Also, to help minimise your environmental footprint by reducing your paper usage, the 'blank page skip' feature will not copy a blank page from your pile of documents.



SUPERIOR USABILITY THAT INCREASES YOUR PRODUCTIVITY.

WEEKLY TIMER

Weekly Timer allows you to store machine on/off times for each day of the week and set the machine to automatically turn on and off at those times, saving both energy and money. These devices do not depend on your staff remembering to switch them off. Weekly Timer is installed on the machine as a standard application.



INNOVATIVE TECHNOLOGY

The user-friendly colour touch screen control panel provides robust document handling and ease of use at your fingertips. Newly designed to incorporate the 'Home screen' with the push of a button, this control panel allows easy swipe with your fingertips like you would a smartphone or tablet.

Customised pre-set shortcuts for up to 50 unique workflows and the commonality of this colour touch screen control panel, to the TASKalfa 3510i/3010i, lets you get on with your work even faster.



ADVANCED USB INTERFACE

Be in control of your documents on the go. Conveniently print-from, and scan-to, any USB drive right from the touch screen control panel in PDF, JPEG, TIFF and XPS file formats.



ADVANCED SOLUTIONS.

HyPAS™

Businesses today are challenged with reducing output costs whilst maximising office productivity. Kyocera's open software development platform allows you to integrate the device into your existing business workflow in exactly the way you need it. Hybrid Platform for Advanced Solutions (HyPAS) transforms the device into a business tool that goes beyond the traditional functions of any normal device. These MFDs can be uniquely configured to interface with specific business applications like your document management system (DMS) or your inventory warehouse system directly from the control panel.



ADVANCED & SECURE NETWORK SCANNING & PRINTING.

The TASKalfa series is equipped with a standard network interface compatible with network protocols such as TCP/IP (IPv4), TCP/IP (IPv6), IPX/SPX, NetBEUI, IPSec, and AppleTalk. It enables network printing on Windows, MAC, UNIX, NetWare and other platforms. These devices enable printing from different paper sizes from the paper cassettes as well as tab paper printing for organisation of your important documents.

Whether you're scanning to your PC, FTP site, document box, USB device, or email, the TASKalfa series ensures secure scanning supporting SMTP over SSL for your peace of mind.

These devices also support the latest WEB protocols in order to send and receive from mail accounts such as Gmail and Hotmail.

At the control panel the high compression setting dramatically reduces the file size of your document, whilst you can opt to enable file size scanning to determine the size of your scanned files prior to sending to your email, thus ensuring you meet your company's IT size restrictions over the network. For PDF archival, the TASKalfa series also features PDF/A scanning to ensure you meet PDF archival ISO regulations within your company.

ADVANCED FUNCTIONALITY.

The TASKalfa 3510i and 3010i are extremely productive, offering fast scanning and finishing speeds, matched to high-capacity finishing options and high-volume paper feeders, designed to exactly suit your specific requirements. Save time and reduce paper waste by printing on both

sides with the standard duplex unit, or by scanning your documents and sending them as digital files in to your workflow. Choose from a number of paper feeders to suit different papers and formats, for fast continuous printing and high volume operations.

PROFESSIONAL 7-BIN MAILBOX

The 7-bin mailbox sorter allows for faster and more efficient organisation of print outs for your business office.

FAST DUAL SCAN DOCUMENT PROCESSOR

At less than one second per page, its dual scan capability dramatically improves your productivity and handles mixed originals with ease for a powerful scanning solution in both full colour and black & white.

WIDE 8.5" COLOUR TOUCH SCREEN CONTROL PANEL

The user-friendly colour touch screen control panel provides robust document handling and ease of use at your fingertips.

ROBUST 3,000 SHEET FINISHER

This robust finisher supports multiposition stapling and a variety of paper weights. Options include 2/4 hole punch and a 7 bin mailbox for your advanced finishing needs.

ADVANCED USB HOST INTERFACE

Conveniently print-from, and scan-to, any USB drive right from the touch screen control panel in PDF, JPEG, TIFF and XPS file formats.

ON BOARD DOCUMENT STORAGE

Create a simple way for you to store, secure and access critical documents at the device through TASKalfa's unique on-board Document box.

VERSATILE MULTI-PURPOSE TRAY

A standard 100-sheet multi-purpose paper tray can handle mixed media types and up to 256gsm for your special jobs.

FLEXIBLE PAPER HANDLING

An innovative paper path design allows for a variety of paper weights through the trays, giving you the flexibility to satisfy virtually all your print and copy needs.



OPTIONAL 1,000 SHEET FINISHER

- > Multi-Position Staple
- > Optional 2 and 4 hole punch unit
- > 60-256gsm



OPTIONAL 3,000 SHEET FINISHER

- > Multi-Position Staple
- > Optional 2 and 4 hole punch unit
- > Optional 7-bin mailbox
- > 60-256gsm



THREE DOCUMENT PROCESSOR OPTIONS

- > 175 Sheet Dual Scan Document Processor with scan speeds up to 160ipm (dual scan)
- > 100 Sheet reversing Automatic Document Processor with scan speeds up to 75 images per minute
- > 50 Sheet reversing Automatic Document Processor with scan speeds up to 48 images per minute



TWO PAPER FEEDER OPTIONS

- > 2 x 500 sheet trays
- > 2 x 1,500 sheet trays



OPTIONAL 7-BIN MAILBOX

- > Up to 7 output bins
- > 7 bins x 100 sheets A4; OR
- > 50 sheets A3/B4
- > 60-163 gsm

ADVANCED FUNCTIONALITY.

STAPLING UP TO 3 POSITIONS



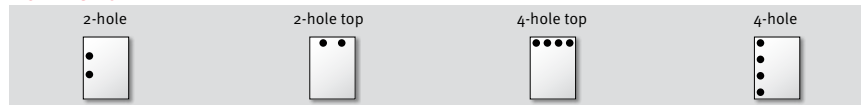
DF-770 FOR
UP TO 1,000
SHEET FINISHING

Stapling up to 50 sheets
A4 or 30 sheets A3 at 3
positions

DF-791 FOR
UP TO 3,000
SHEET FINISHING

Stapling up to 65 sheets
A4 or 30 sheets A3 at 3
positions. Also includes
walk up stapling

HOLE PUNCH



Requires PH-7C

Requires PH-7C

7-BIN MAILBOX TRAY

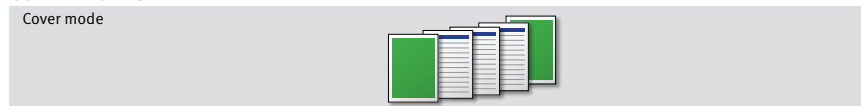
7 trays for up to 100 sheets per tray



Available on the
DF-791 with MT-730
attached

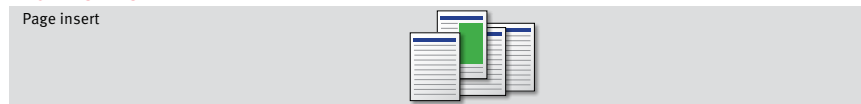
Requires MT-730

COVER MODES



Add a cover to your print or finished copies. You can print/copy the first page and/or the last page on to coloured paper or thick paper fed from different paper sources.

PAGE INSERTS



Insert different colour or type of media between a set number of pages to differentiate your prints and copies.

Most of the optional accessories on the TASKalfa 3510i and 3010i are common with other TASKalfa series in the range. So if you want to utilise your assets by mixing and matching accessories as your business requires, then the TASKalfa series is perfect for you. Select from three document processors, two document finishers, 2 and 4 hole punch

unit and a 7-bin mailbox for efficient output of documents. Additional paper cassettes can give the TASKalfa 3510i and 3010i a supply of paper of up to 4,100 sheets, for hours of non-stop printing. No matter how your office carries out its document management, you can do it better with a Kyocera TASKalfa MFD.

GENERAL

Technology: KYOCERA Laser Monochrome, HyPAS solution platform

Engine speed:

TASKalfa 3510i: Up to 35/17 ppm A4/A3
TASKalfa 3010i: Up to 30/15 ppm A4/A3

Resolution: 600 x 600 dpi, Multi-bit technology for print quality of 9,600 dpi equivalent x 600 dpi

Warm-up time: Approx. 23 seconds or less

Time to first page:

TASKalfa 3510i: Approx. 3.6 seconds or less
TASKalfa 3010i: Approx. 3.6 seconds or less

CPU: Freescale QorIQ P1022 (Dual Core) 800 MHz

Memory (std/max): 2 GB RAM + 160 GB HDD
Max memory increased to 2.5GB when DP-772 installed

Standard interface: 4 x USB 2.0 (Hi-Speed), USB Host 2.0, Fast Ethernet 10BaseT/100BaseTX/1000BaseT, slot for optional print server, slot for optional SD-card, slot for optional Fax System

Dimensions (W x D x H): Main Unit: 594 x 738 x 683 mm

Weight: Main unit approx. 67 kg

Power source: AC 220 V ~ 240 V, 50/60 Hz

Power consumption:

TASKalfa 3510i: Printing/Copying: 660 W
Sleep mode: 9.4 W, Energy saving mode: 1.6 W
TASKalfa 3010i: Printing/Copying: 620 W
Sleep mode: 9.4 W, Energy saving mode: 1.6 W

Safety standards: GS, TÜV, CE

This unit is manufactured according to ISO 9001 quality standard and ISO 14001 environmental standard. Reduction of Hazardous Substances (RoHS) compliant.

For Australia & New Zealand: AS/NZS3260, C-Tick, A-Tick / Telepermit, International Energy Star Program.

PAPER HANDLING

All paper capacities quoted are based on 80gsm paper, thickness of max. 0.11 mm. Please use paper recommended by KYOCERA under normal environmental conditions.

Input capacity: 100-sheet multi-purpose tray, 45–256 gsm, A5R–A3, 2 x 500-sheet universal paper cassette, 60–163 gsm, A5R–A3

Max. input capacity with options: 4,100 sheets

Duplex unit: Duplex as standard supports A5R–A3, 60–163 gsm

Standard output capacity: Standard 300 sheets face-down (250 sheets, Job Separator area 50 sheets)

PRINT FUNCTIONS

Controller language: PRESCRIBE IIe

Emulations: PCL6 (PCL5c / PCLXL), KPDL3 (PostScript 3 compatible), PDF Direct Print, XPS Direct Print

Operating systems: All current Windows operating systems, Mac OS X version 10.4 or higher, UNIX LINUX, as well as other operating systems on request

Fonts/barcodes: 93 outline fonts (PCL), 136 fonts (KPDL3), 8 fonts (Windows Vista), 1 Bitmap font, 45 types of one dimensional barcodes plus two-dimensional barcode (PDF-417)

Print features: Encrypted PDF Direct Print, IPP printing, e-mail printing, WSD print, secure printing via SSL, IPsec, SNMV3, quick copy, proof and hold, Private Print, Job storage and job management functionality

KYOCERA Mobile Print®: KYOCERA Mobile Print supported devices. Application available to download from the iOS App store and Google Play

Cost recovery & security: Compatible with all major third party integration software. Compatible with most web print applications

COPY FUNCTIONS

Max. original size: A3

Continuous copying: 1–999

Zoom range: 25–400 % in 1 % steps

Preset magnification ratios: 5 reductions/5 enlargements (5R / 5E)

Digital features: Scan-once-copy-many, electronic sort, 2in1 and 4in1 function, image repeat copy, page numbering, cover mode, booklet copy, interrupt copy, form overlay, stamp function, margin shift and skip blank page function

Exposure mode: Auto, manual: 7 or 13 steps

Image adjustments: Text, Photo, Text + Photo, Graphic/Map

SCAN FUNCTIONS

Functionality: Scan-to-email, Scan-to-FTP, Scan-to-SMB, Scan-to-USB Host, Scan-to-box, Network TWAIN, WSD scan

Scan speed:

160 images per minute in mono
80 images per minute in colour
(A4, 300 dpi, duplex with DP-772)

Scan resolution: 600 dpi, 400 dpi, 300 dpi, 200 x 100 dpi, 200 x 400 dpi (256 greyscales)

Max. scan size: A3

Original recognition: Text, Photo, Text + Photo, optimised for OCR

Network protocol: TCP/IP

File types: PDF (high compressive, encrypted, PDF/A), Searchable PDF (Option), JPEG, TIFF, XPS

FAX FUNCTIONS (optional)

Compatibility: ITU-T Super G3

Modem speed: Max. 33.6 kbps

Transmission speed: Max. 3 seconds (JIBG)

Scanning density: Normal: 200 x 100 dpi, Fine: 200 x 200 dpi, Superfine: 200 x 400 dpi, Ultrafine: 400 x 400 dpi

Max. original size: A3

Compression method: JIBG, MMR, MR, MH

Memory: Standard 12 MB, max. 120 MB

Features: Opt. Internet-fax, network faxing, rotate transmission, rotate reception, duplex fax reception, memory reception, mailbox, remote diagnostics, dual fax with second fax system

CONSUMABLES

TASKalfa 3510i: TK-7209; Micro-Particle toner black for 35,000 pages measured at 6% A4 coverage

TASKalfa 3010i: TK-7109; Micro-Particle toner black for 20,000 pages measured at 6% A4 coverage

Staple cartridge: SH-10 for optional DF-770; 3 x 5,000 staples per box, SH-12 for optional DF-791; 3 x 5,000 staples per box

OPTIONS

Fax Unit: Fax System W

Internet Fax Kit: Internet Fax Kit (A) Licence

Document Processors:

DP-773 (reverse automatic document processor) - 50 sheets, 45–160 gsm (simplex), 50–120gsm (duplex), A5R–A3

DP-770 (reverse automatic document processor) - 100 sheets, 45–160 gsm (simplex)

DP-772 (dual scan document processor) - 175 sheets, 35–220 gsm (simplex), 50–220 gsm (duplex), A6R–A3, folio

Paper Feeders: PF-791 Paper feeder: 2 x 500 sheets, 60–256 gsm,

A5R–A3

PF-810 Paper feeder: 2 x 1,500 sheets, 60–256 gsm, A4, B5, letter

Document finishing:

DF-791 + attachment kit AK-740:

Main tray: max. 3,000 sheets A4; max. 60–256 gsm; B5R – A3, Sub tray: 200 sheets A4; 60–256gsm; B5R-A3; Stapling up to 65 sheets A4 or 30 sheets A3 at 3 positions, B5–A3. Walk up stapling available for up to 3 positions.

DF-770 + attachment kit AK-740:

Main tray: 1,000 sheets A4, 60–256 gsm, B5E–A3, 3 positions stapling up to 50 sheets A4 or 30 sheets A3, A3 Sub tray: 100 sheets A4, 60–256gsm, A4-A6R

PH-7C Hole punch unit for DF-791/DF-770: 2-hole/4-hole 60–256 gsm, A5R–A3

MT-730 Mailbox sorter for DF-791: 7 bins x 100 sheets A4, 50 sheets A3/B4, 60–163 gsm

DT-730: Document tray for easy handling of paper

Security:

Data security kit (E): ISO 15408 (Common Criteria) with security level EAL 3

Printed Document Guard Kit (B): Protection from unauthorised copies of documents

Card Authentication Kit (CAK): CAK Licence to enable USB card readers for secure proximity card release

Other:

SD-Card: 1 slot for printing forms, fonts, logos, macro storage

Fax memory: MM-16-128: Image memory (120 MB)

Keyboard: USB Keyboard / Wireless Keyboard

Card Reader Holder: Allows USB card readers to be securely held and stored

Keyboard Holder: Allows USB keyboards to be securely held and stored

Platen Cover (E): Platen cover. Cannot be used in conjunction with document processors

IB-50: Gigabit-Ethernet board 10BaseT/100BaseTX/1000BaseT

IB-51: Wireless Ethernet board

Cabinet: Metal cabinet

Scan Extension Licence: Scan to searchable PDF solution (embedded OCR)



HyPAS®

KYOCERA Document Solutions Australia
Tel 13 KYOCERA (596 2372)
www.KyoceraDocumentSolutions.com.au

KYOCERA Document Solutions New Zealand Ltd*
Tel 0508 KYOCERA (596 2372)
www.KyoceraDocumentSolutions.co.nz

* KYOCERA Document Solutions New Zealand is the trading name of the New Zealand branch of KYOCERA Document Solutions Australia Pty Ltd a corporation incorporated in Australia.

Kyocera does not warrant that any specifications mentioned will be error-free. Specifications are subject to change without notice. Information is correct at time of going to press. All other brand and product names may be registered trademarks or trademarks of their respective holders and are hereby acknowledged.

KYOCERA Document Solutions Australia Pty. Ltd ABN 77 003 852 444

YOUR KYOCERA BUSINESS-PARTNER

 **KYOCERA**
Document Solutions